



C2R2MAX

Version 03 – 03 December 2009

B21

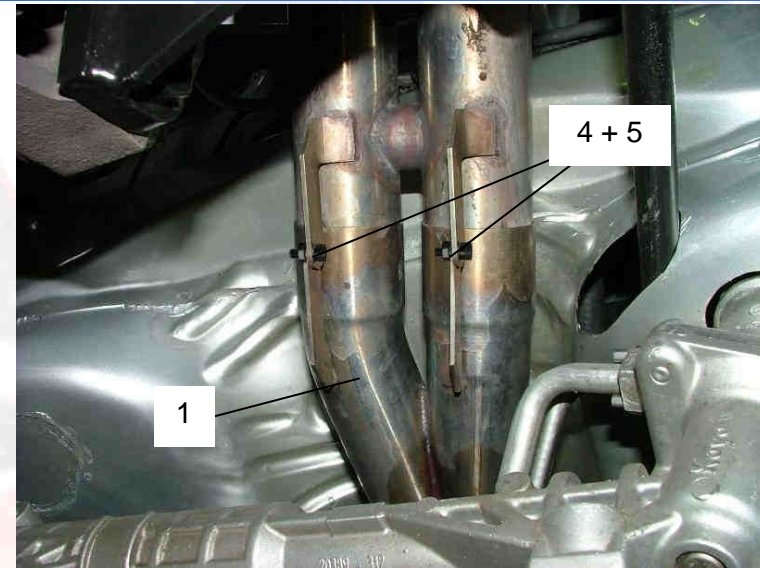
EXHAUST LINE



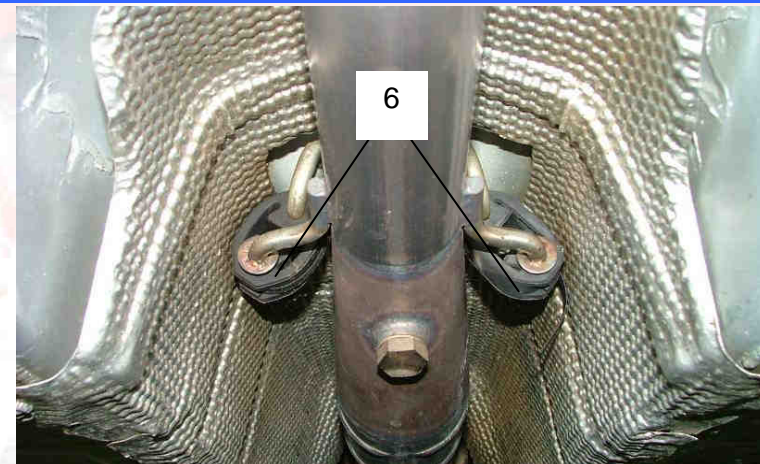
Catalytic converter / Silencer:

Apply copper grease to the insertion areas of the secondary into the catalytic converter / silencer (easier assembly and disassembly).

Fit the catalytic converter / silencer (*ref. 1*) onto the manifold secondary using the screws (*ref. 5*) and nuts (*ref. 4*).



Fit the front part of the catalytic converter / silencer onto the body, using two silent-blocks (*ref. 6*).



B21
Exhaust
line



B
COOLING



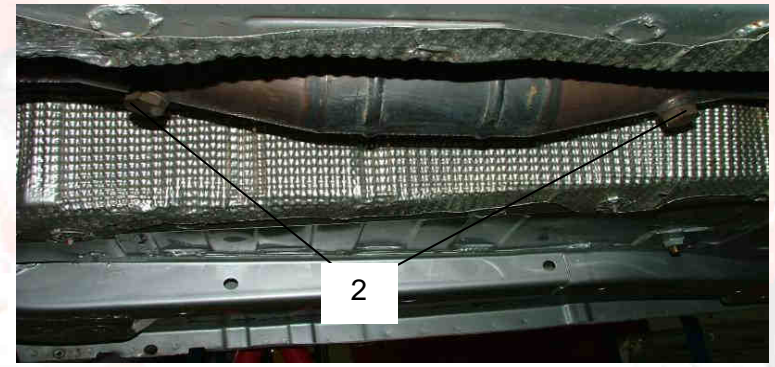
Fit the rear part of the catalytic converter / silencer onto the body, using two M6 nuts.
We suggest you use the standard collar nuts reference no. **6936C9**



242
1.5 m.kg



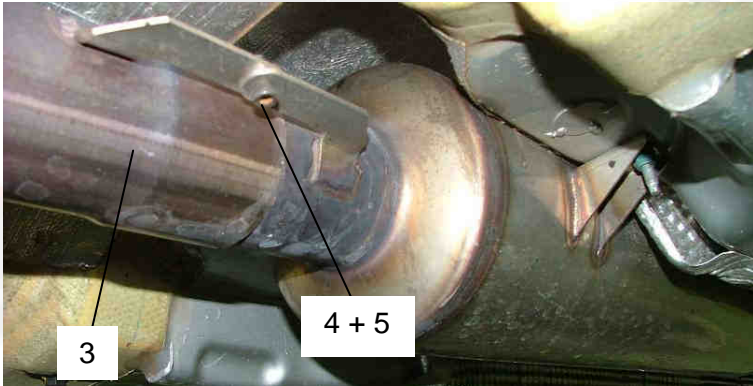
Apply copper grease on the threads of both catalytic converter plugs (easier assembly and disassembly).
Fit the two catalytic converter plugs (*ref. 2*) onto the catalytic converter.





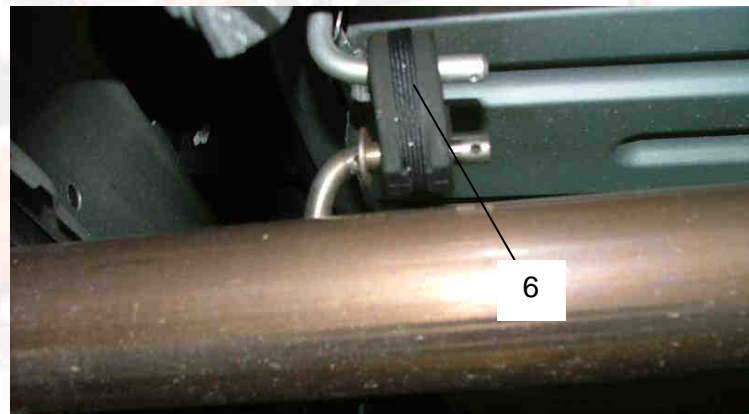
Apply copper grease to the insertion areas of the leakage tube and the catalytic converter / silencer (easier assembly and disassembly).

Fit the leakage tube (*ref. 3*) onto the catalytic converter / silencer using the screws (*ref. 5*) and the nut (*ref. 4*).





Fit the leakage tube onto the body using the two silent-blocks ([ref. 6](#)).



Nota : The final tube of exhaust line has to be shorter than the longest point of the car (in accordance to the FIA rule).

If the tube is too long on you car (as shown on the opposite picture), do a cut.





B21
Exhaust
line



B
COOLING